

Scrubber Level Control System (SLS)

Automatic Level Control for Gas Scrubber Applications

FW Murphy Gas Compressor Scrubber Level System

The system provides for liquid control in gas scrubber applications by dumping liquids to drain and protect compressors with high liquid level switch. Wetted metal parts are made to survive constant use in corrosive environments.

Filter Regulator and Gage
 Instrument-quality
 Air/Gas supply

Pneumatic Level Control
 Float-actuated level snap-acting switch controls pneumatic pressure to open and close Dump Valve. LS200NDVOR, Dump Valve with manual valve operator and test button, pressure regulator and pressure indicating gauge.

DVU model valves
 operate on 30-70 psig (207-483 kPa: 2-5 bar).

High Level Shutdown Switch

Float-actuated level switches to alarm and/or shutdown the equipment. LS200 and MLS-020 models available. Class 1, Division 1.

MLS / Electric models wired
 to control panel

Captured Vent System

Using the Delta-P model of DVU and modified plumbing, this system captures exhaust gases from the dump cycle and pipes them to an engine, compressor or vapor recovery system.

Pneumatic Dump Valves

Two piece union design allows soft plug and hard seat to be replaced without disassembling outlet piping or scrubber pipe connection.

DVU-DP model valves
 operate on 30-120 psig (207-827 kPa: 2-8 bar).

You save money by purchasing the SLS, which includes the following:

- **LS200, MLS-020*** High Level Shutdown Switch
- **DVU**** Pneumatic Dump Valve
- **LS200NDVOR** Pneumatic Level Control and Filter Regulator with Gage (less regulator option available).

For detailed information on Level Switches and Dump Valves visit www.fwmurphy.com.

* Choose model using the How To Order matrix.

**Specify Dump Valve model when ordering. The DVU-DP is needed for the Captured Vent System option.

Service Tip

The Gage and Filter/Regulator on the LS200NDVOR help keep the control medium clean and dry. It also allows operator to adjust pressure to recommended level of 30-70 psig. The Gage and Filter/Regulator are recommended to help increase system life and trouble-free operation.

Note: Do not operate the filter/regulator above 70 psig.

Level Switches

- Designed for Harsh Gas Compressor Scrubber Applications.
 NOTE: Not recommended for hydrogen gas applications.
- Stainless Steel Float: Specific gravity varies by model and configuration, see Specific Gravity.
- For Separators/Scrubbers rated for up to 2000 psi (13.8 MPa) [138 bar] Working Pressure.
- Electric and Pneumatic Models Available.

Dump Valve Operator/ Dump Valve

- Hex Union Allows Plug and Seat Replacement Without Piping Removal.
- Standard model: Operates on 30-70 psig (207-483 kPa) [2.1-4.83 bar] Control Pressure.
 DP model: Operates on 30-120 psig (207-827 kPa) [2.1-8.3 bar] Control Pressure.
- Manual Valve Operator.

Specific Gravity

Minimum Allowable Specific Gravity			
Model	Float Extension Length (inch)	Pressure (psi)	Specific Gravity
LS200	0	2000	0.55
	1		0.7
LS200NDVO	0	2000	0.63
	1		0.73
MLS-020	0	2000	0.5
	1		0.65

NOTE: DO NOT OVERPRESSURE. The stainless-steel float may be deformed if exposed to pressure beyond rated (2000 psig). This can affect specific gravity and overall operation.

How To Order

SLS

The SLS Kits Include LS200, LS200NDVO(R) and a DVU Valve.

<u>SLS150</u>	-	<u>LR</u>	-	<u>DP</u>																								
		<table><tr><td colspan="2">Options</td></tr><tr><td>Blank</td><td>= Include Filter/ Regulator</td></tr><tr><td>LR</td><td>= Less Regulator</td></tr></table>	Options		Blank	= Include Filter/ Regulator	LR	= Less Regulator	<table><tr><td colspan="2">Dump Valve Model</td></tr><tr><td>Blank</td><td>= Standard</td></tr><tr><td>**DP</td><td>= Delta-P (Captured Vent option)</td></tr></table>		Dump Valve Model		Blank	= Standard	**DP	= Delta-P (Captured Vent option)												
Options																												
Blank	= Include Filter/ Regulator																											
LR	= Less Regulator																											
Dump Valve Model																												
Blank	= Standard																											
**DP	= Delta-P (Captured Vent option)																											
<table><tr><th>Model</th><th>Dump Valve</th><th>Inlet</th><th>Outlet</th><th>Trim Size</th><th>Maximum Working Pressure</th></tr><tr><td>SLS150</td><td>DVU150</td><td>1" NPT</td><td>1/2" NPT</td><td>0.359 IN. (9 MM)</td><td>1800 psig</td></tr><tr><td>SLS175*</td><td>DVU175</td><td>1" NPT</td><td>3/4" NPT</td><td>0.359 IN. (9 MM)</td><td>1800 psig</td></tr><tr><td>SLS2120</td><td>DVU2120</td><td>2" NPT</td><td>1" NPT</td><td>0.436 IN. (11 MM)</td><td>2000 psig</td></tr></table>	Model	Dump Valve	Inlet	Outlet	Trim Size	Maximum Working Pressure	SLS150	DVU150	1" NPT	1/2" NPT	0.359 IN. (9 MM)	1800 psig	SLS175*	DVU175	1" NPT	3/4" NPT	0.359 IN. (9 MM)	1800 psig	SLS2120	DVU2120	2" NPT	1" NPT	0.436 IN. (11 MM)	2000 psig				
Model	Dump Valve	Inlet	Outlet	Trim Size	Maximum Working Pressure																							
SLS150	DVU150	1" NPT	1/2" NPT	0.359 IN. (9 MM)	1800 psig																							
SLS175*	DVU175	1" NPT	3/4" NPT	0.359 IN. (9 MM)	1800 psig																							
SLS2120	DVU2120	2" NPT	1" NPT	0.436 IN. (11 MM)	2000 psig																							

*Filter/regulator option not available.

**Order the DVU-DP for the Captured Vent System option.

LR: Less regulator option is available with all models.

MSLS

The MSLS Kits Include MLS-020, LS200NDVO(R) and a DVU Valve.

MSLS150		-	LR		-	TF		-	DP	
Options			Options			Dump Valve Model				
Blank = Include Filter/ Regulator			Blank = Without Test Function			Blank = Standard				
LR = Less Regulator			TF = Test Function			**DP = Delta-P (Captured Vent option)				
Model	Dump Valve	Inlet	Outlet	Trim Size	Maximum Working Pressure					
MSLS150	DVU150	1" NPT	1/2" NPT	0.359 IN. (9 MM)	1800 psig					
MSLS175*	DVU175	1" NPT	3/4" NPT	0.359 IN. (9 MM)	1800 psig					
MSLS2120	DVU2120	2" NPT	1" NPT	0.436 IN. (11 MM)	2000 psig					

*Filter/regulator option not available.

**Order the DVU-DP for the Captured Vent System option.

LR: Less regulator option is available with all models.

TF: Test function option available with less regulator (except MSLS2115).

Approximate Shipping Weight and Dimensions		
Model	Weight	Dimension
SLS2120 Kit	25 lb. 6 oz. (8.7 kg)	(w x h x d) 15 x 15 x 12 in. (381 x 381 x 305 mm)

MANUFACTURING, SALES & ENGINEERING
2151 RANDON DYER ROAD
ROSENBERG, TX 77471

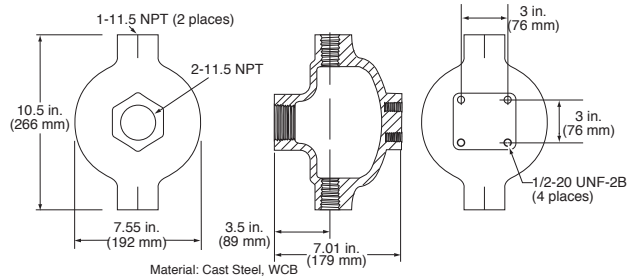
SALES, SERVICES & SUPPORT
4646 S HARVARD AVE
TULSA, OK 74135

DOMESTIC SALES & SUPPORT
FW MURPHY PRODUCTS
PHONE: 918 957 1000
EMAIL: INFO@FWMURPHY.COM
WWW.FWMURPHY.COM

FW MURPHY CONTROL SYSTEMS & SERVICES
PHONE: 281 633 4500
EMAIL: CSS-SOLUTIONS@DOVERPRECISION.COM

Accessories

Float Chamber 15051098

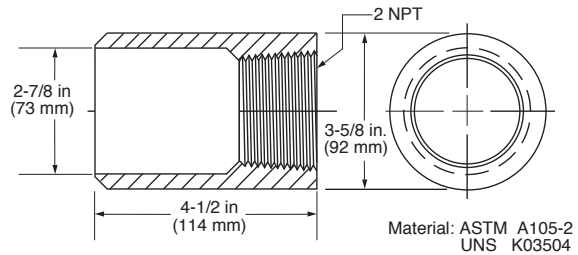


Operating Pressure: 2000 psig (13.8 MPa) [138 bar]

Operating Temperature: 400° F (204° C)

Shipping Weight: 32 lb. (14.5 kg)

Weld Collar 15050375

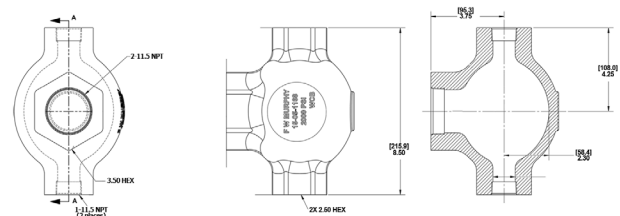


Operating Pressure: 2000 psig (13.8 MPa) [138 bar]

Operating Temperature: 400° F (204° C)

Shipping Weight: 6 lb. (2.7 kg)

Series 100 Float Chamber 15700799

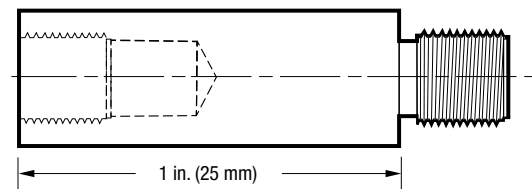


Operating Pressure: 2000 psig (13.8 MPa) [138 bar]

Operating Temperature: 400° F (204° C)

Shipping Weight: 18 lb. (8.16 kg)

1-Inch Float Shaft Extensions



Float Shaft Extension **15000478** (LS200) 12-24 UNC threads

Float Shaft Extension **15000892** (MLS) 10-32 UNF threads

INTERNATIONAL SALES & SUPPORT
LATIN AMERICA & CARIBBEAN
PHONE: +1 918 770 8775
EMAIL: INTERNATIONAL@FWMURPHY.COM



FM 668933 (Rosenberg, TX - USA)

