

Important USB Information

1815242 (updated 6-25-2018)

When a USB is required to program an FW Murphy product, please adhere to the following guidelines.

- The USB must be formatted as a Flash Drive.
- To identify the format, follow these steps:
 - Plug the USB into the USB port on your computer
 - Find the USB in the Windows Explorer. See Figure 1.
 - Right click on the USB.
 - Left click Properties.
 - Click the Hardware tab.
 - The correct USB is listed as FlashDiskUSB Device.
 - Drives listed as UDisk or UDrive Device will not be compatible. See Figure 2.

The new FW Murphy USBs are white in color and are formatted as Flash Drives. Older, non-compliant FW Murphy USBs are black (different versions) and may or may not be Flash Drives.

If purchasing a USB, SanDisk brand will work with FW Murphy products. SanDisk only makes Flash Drive USBs.

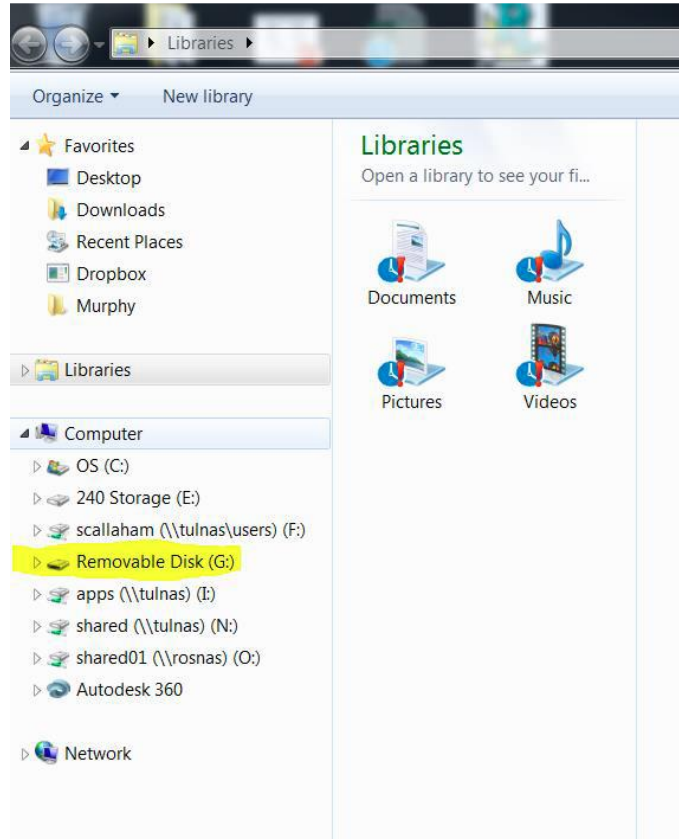


Figure 1

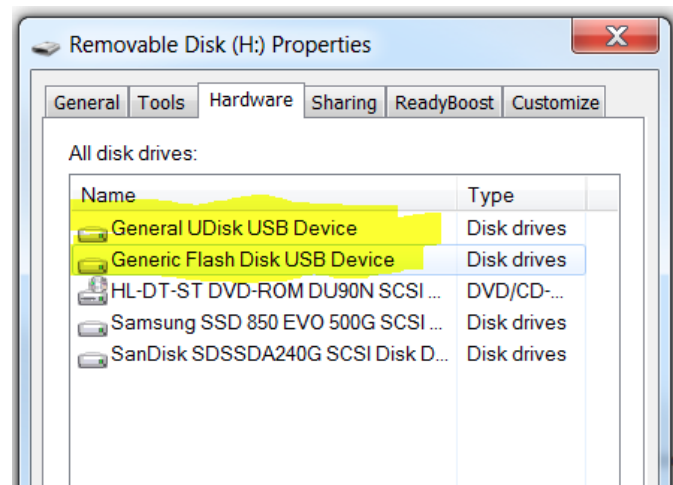


Figure 2