

# High-Pressure Brass Regulators

## RG40 Models

The RG40 is a compact, high-pressure, spring-operated regulator designed to reduce high pressures down to working pressures. The standard unit features a rugged brass body and housing with a durable metal diaphragm and nylon disk for handling high-pressure drops.

A stainless steel version is also available and is good for NACE services. Typical applications include reduction of high pressure to operate chemical injection pumps, valve actuators or controllers. Its compact form and cost-effective design make it an ideal choice for many other applications as well.

### Specifications

**Connection:** 1/4" NPT (1 inlet, 3 outlets)

**Inlet Pressure Rating:** 5000 psi

**Temperature Range:**

**Brass:** -70° F to 225° F (-57° C to 107° C)

**Stainless:** -40° F to 225° F (-40° C to 107° C)

**Output Ranges:** 0 – 125 psi, 0 – 225 psi

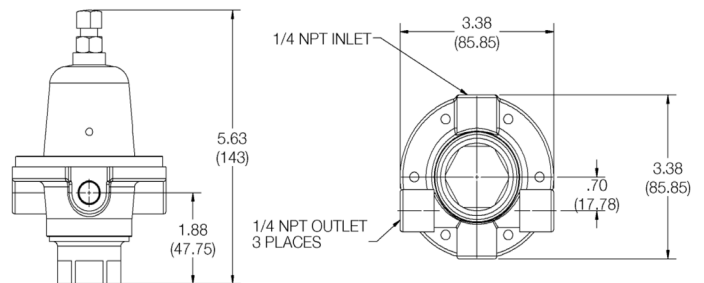
**Adjustment Screw:** Standard, Tee-handle

Materials	Brass	Stainless
<b>Body and Housing:</b>	Brass	316SS
<b>Diaphragm:</b>	Stainless steel	Monel 400
<b>Orifice:</b>	Stainless steel	316SS
<b>Disk:</b>	Nylon	PTFE
<b>Spring:</b>	Steel	Stainless steel



All trademarks and service marks used in this document are the property of their respective owners. This Beaumont Manufacturing and Distribution Co. product is exclusively distributed for new equipment packages by FW Murphy in the Natural Gas Compression market.

### Dimensions



### Capacities in SCFH of .6 SG Natural Gas

Outlet Pressure Range (psi)	Outlet Pressure Setting (psi)	Inlet Pressure (psi)													
		100		250		500		750		1000		1500		2000	
		10% Droop	20% Droop	10% Droop	20% Droop	10% Droop	20% Droop	10% Droop	20% Droop	10% Droop	20% Droop	10% Droop	20% Droop	10% Droop	20% Droop
0 to 125	75	258	452	645	1032	1032	1677	1226	1935	1290	2064	1419	2193	1548	2322
0 to 225	150	-	-	839	1161	1290	2193	1742	2838	1935	2903	2129	3548	2322	3870
0 to 225	225	-	-	645	1032	1806	2709	2451	3741	3096	4515	3483	5160	3870	5805

### How to Order

Options are listed below. All configurations may not be available. Call your sales representative or FW Murphy for more information.

Example Model No. **RG40-1T**

RG40 Brass Housing Regulator with Spring Range of 0-125 psi and Adjusting Tee-Handle

<b>RG40</b>	-	<b>1</b>	<b>T</b>
<b>Model</b>		<b>Spring Range</b>	<b>Adjusting</b>
RG40 = Brass Housing RG40SS = 316SS Housing		1 = 0-125 psi 2 = 0-225 psi	Blank = Standard T = Tee-Handle

FW Murphy is the exclusive BMD distributor for new equipment packages.